



# Advancing High-Grade Gold & Copper Projects in Finland, Norway, and Spain

*Solana Project, Spain*

*Q2, 2026*

# Forward Looking Statements

*This document may contain "forward-looking statements" within the meaning of Canadian securities legislation and the United States Private Securities Litigation Reform Act of 1995. These forward-looking statements are made as of the date of this document and Capella Minerals does not intend, and does not assume any obligation, to update these forward-looking statements.*

*Forward-looking statements relate to future events or future performance and reflect Capella Minerals managements expectations or beliefs regarding future events and include, but are not limited to, statements with respect to the ability to raise funds and the availability of funds, future plans for exploration and development, including the obtaining of necessary permits, the potential of Capella Minerals properties to contain mineralization, whether or not at economically interesting grades, the timing of exploration and development work, the appointment of management and directors, and the filing of a technical report, and the ability of Capella Minerals to attract other mining companies to enter into a joint venture or acquire one or more of Capella Minerals' properties. In certain cases, forward-looking statements can be identified by the use of words such as "plans", "expects" or "does not expect", "is expected", "budget", "scheduled", "estimates", "forecasts", "intends", "anticipates" or "does not anticipate", or "believes", or variations of such words and phrases or statements that certain actions, events or results "may", "could", "would", "might" or "will be taken", "occur" or "be achieved" or the negative of these terms or comparable terminology. By their very nature forward-looking statements involve known and unknown risks, uncertainties and other factors which may cause the actual results, performance or achievements of Capella Minerals to be materially different from any future results, performance or achievements expressed or implied by the forward-looking statements. Such factors include, among others, risks related to actual results of exploration activities; general economic conditions and the availability of investment funds, changes in project parameters as plans continue to be refined; fluctuations in prices of minerals and in exchange rates; variations in grade; regulatory and political risk, environmental risks, accidents, labour disputes and other risks of the mining industry; delays in obtaining governmental approvals or financing; the absence of potential joint venture partners or acquirers of Capella Minerals' properties; as well as those factors detailed from time to time in Capella Minerals' interim and annual financial statements and management's discussion and analysis of those statements, all of which are filed and available for review on SEDAR at [www.sedar.com](http://www.sedar.com). Although Capella Minerals has attempted to identify important factors that could cause actual actions, events or results to differ materially from those described in forward-looking statements, there may be other factors that cause actions, events or results not to be as anticipated, estimated or intended. There can be no assurance that forward-looking statements will prove to be accurate, as actual results and future events could differ materially from those anticipated in such statements. Accordingly, readers should not place undue reliance on forward-looking statements.*

*This presentation also contains or references certain market, industry and peer group data which is based upon information from independent industry publications, market research, analyst reports and surveys and other publicly available sources. Although the Company believe these sources to be generally reliable, such information is subject to interpretation and cannot be verified with complete certainty due to limits on the availability and reliability of raw data, the voluntary nature of the data gathering process and other inherent limitations and uncertainties. The Company has not independently verified any of the data from third party sources referred to in this presentation and accordingly, the accuracy and completeness of such data is not guaranteed.*

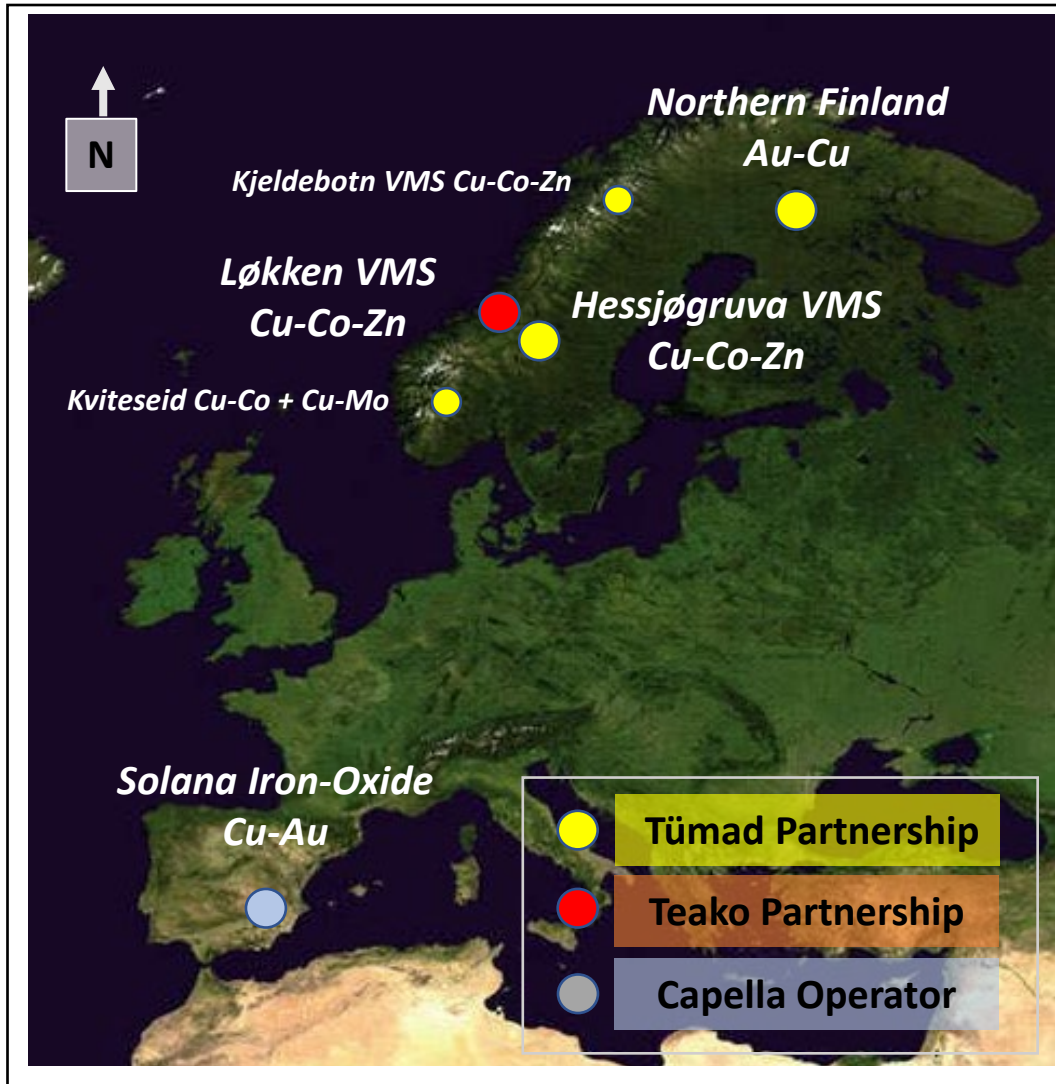
*The Company also reminds potential investors that Mineral Resources which are not Mineral Reserves have not yet demonstrated economic viability.*

## QUALIFIED PERSON (QP) STATEMENT

*The technical and scientific information contained in this presentation has been reviewed and approved for release by Dr. Eric Roth, the Company's President & CEO. Dr. Roth is a Qualified Person as defined by National Instrument 43-101.*

# Capella's Portfolio and Partnerships

Focus on High-Grade Gold and Copper Projects in Europe



## Solana Iron-Oxide Copper-Gold (IOCG) Project, Spain

- Extensive, high-grade Au-Cu-haematite/magnetite vein system overlying buried IOCG targets
- First core drilling expected late-2026

## Northern Finland Au-Cu Project

- 5 Exploration Licences (EL's), core drilling in progress at Killerö E orogenic Au-Cu project. **4,000m** core drilling to be completed by September 2026, under Tümad JV.

## Hessjøgruva Cu-Co-Zn VMS Project, Norway

- Advanced-stage exploration project with 12,000m of historical drilling. **8,000m** core drilling to be completed by September 2026, under Tümad JV.

## Løkken Cu-Co-Zn VMS Project, Norway

- CMIL 10% carried interest to production

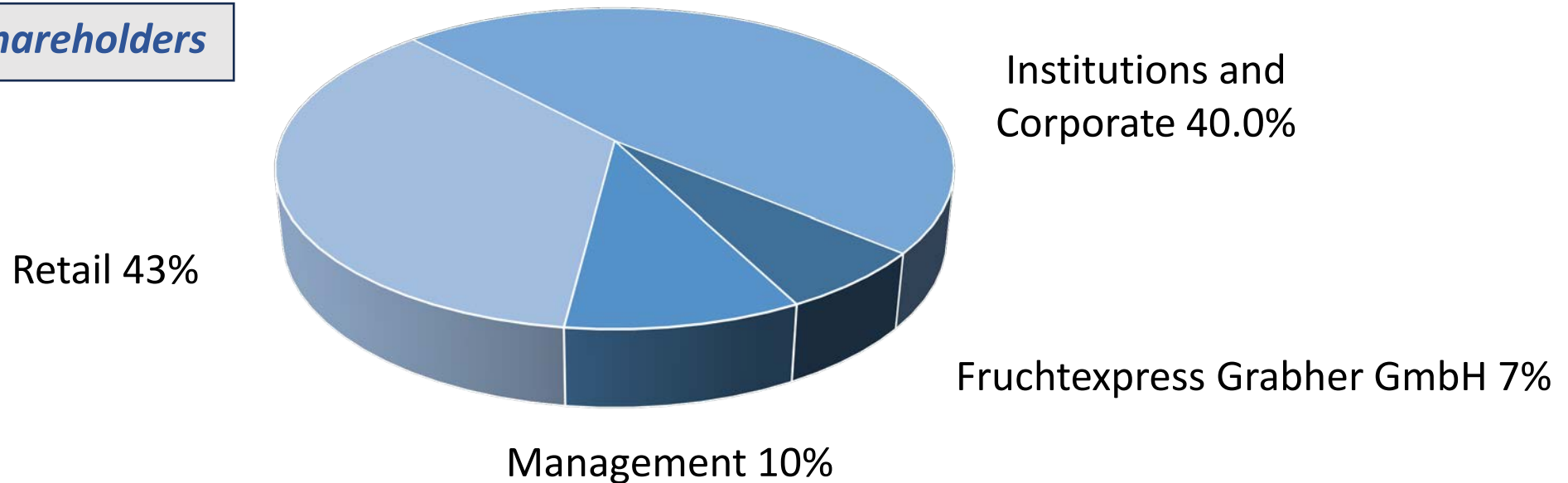
# Capella's Capital Structure

May 1, 2026



Common Shares Outstanding	75.9M	
Options (Av. price \$C 0.10)	4.8M	
Warrants (Av. price \$C 0.075)	31.0M	<b>NSR's</b>
Market Capitalization	\$C 7M	1% Savant Gold Project (PPP) – 0.5% Buy-Back for CAD 1M
Cash	\$C 1M	2% Central Finland Li Project (FIN) – 1% Buy-Back for Euro 1M

## Major Shareholders



# Capella's Leadership & Experience

A Proven Track Record of Success Through Discovery



## Senior Management

### Eric Roth – President & CEO, Director

- 35 years experience in global mining / exploration
- COO of Mariana Resources (acquired for US\$175M in 2017)
- CEO of Extorre Gold Mines (acquired for C\$440M in 2012)
- VP Greenfields Exploration - AngloGold Ashanti (2005-2008)
  - 20+Moz Au in 4 Discoveries including Tropicana (Australia)

### Sharon Cooper – Chief Financial Officer

- Former CFO of Mariana Resources Ltd, CFO Awale Resources
- CA with 20 years in accounting and auditing roles for mining and mining-related companies

### Karen Davies – VP Shareholder Relations and Corp Development

- Former Head of Investor Relations of Mariana Resources Ltd. (acquired for US\$175M in 2017)
- 20+ years mining and capital markets

## Board of Directors

### Nursel Atar

- 30 years experience in Intl. Mining and Corporate law
- Canadian / Turkish Accreditations

### Eric Roth – President & CEO / Director

### Glen Parsons

- Former President & CEO of Mariana Resources
- Former President & CEO of Awalé Resources Ltd

### Mary Little

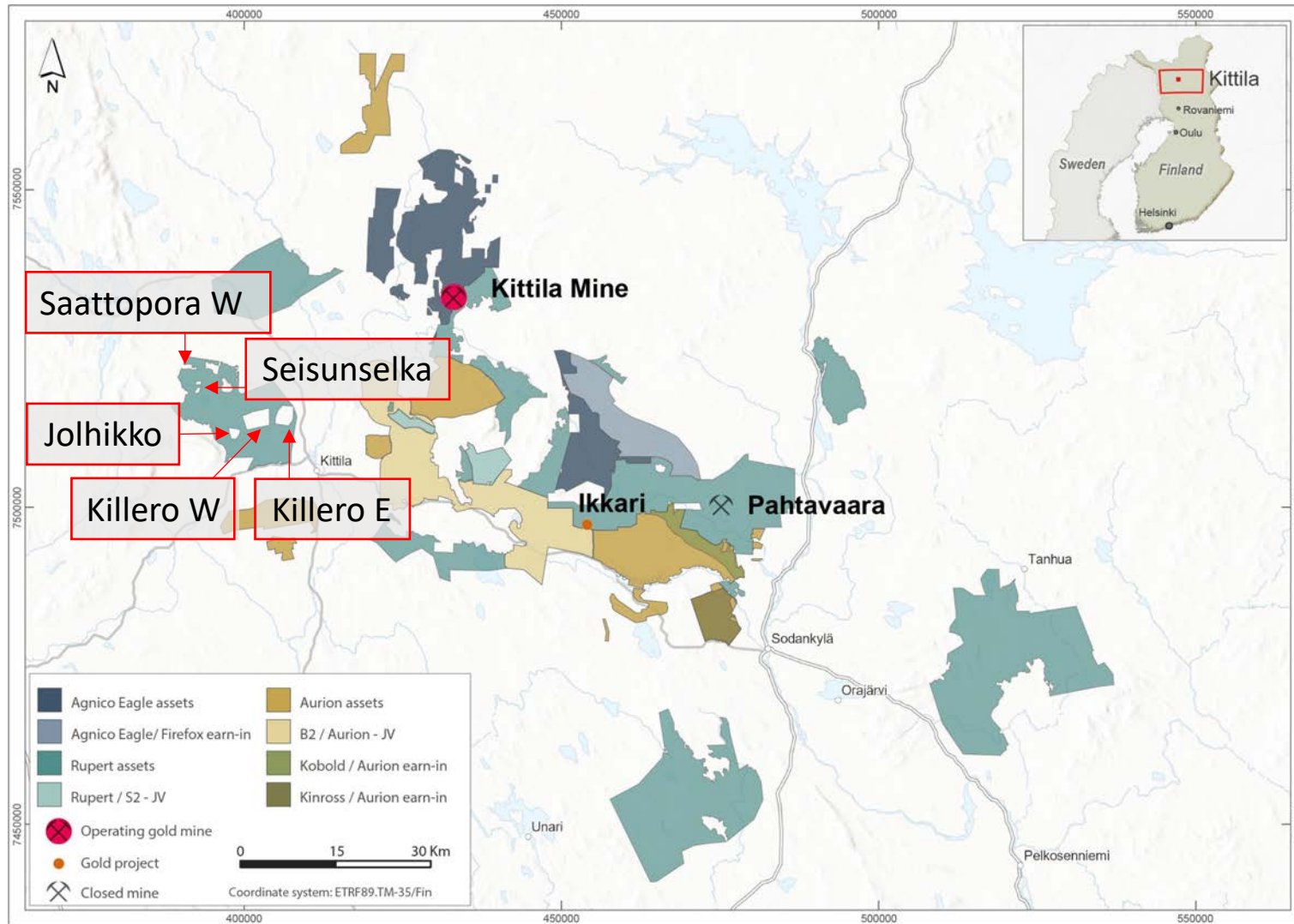
- Founding CEO of Mirasol Resources Ltd
- Senior positions in Cyprus Amax, WMC Ltd, Newmont Exploration, including 15 years based in Latin America

# NORTHERN FINLAND GOLD-COPPER PROJECTS

## Central Lapland Greenstone Belt

# Central Lapland Greenstone Belt

Agnico Eagle Consolidation (April 20, 2026) and Capella Projects



**Agnico Eagle Mines Ltd (TSX: AEM)** announced a significant consolidation of gold assets in the CLGB (Rupert/Aurion/B2Gold) on April 20, 2026

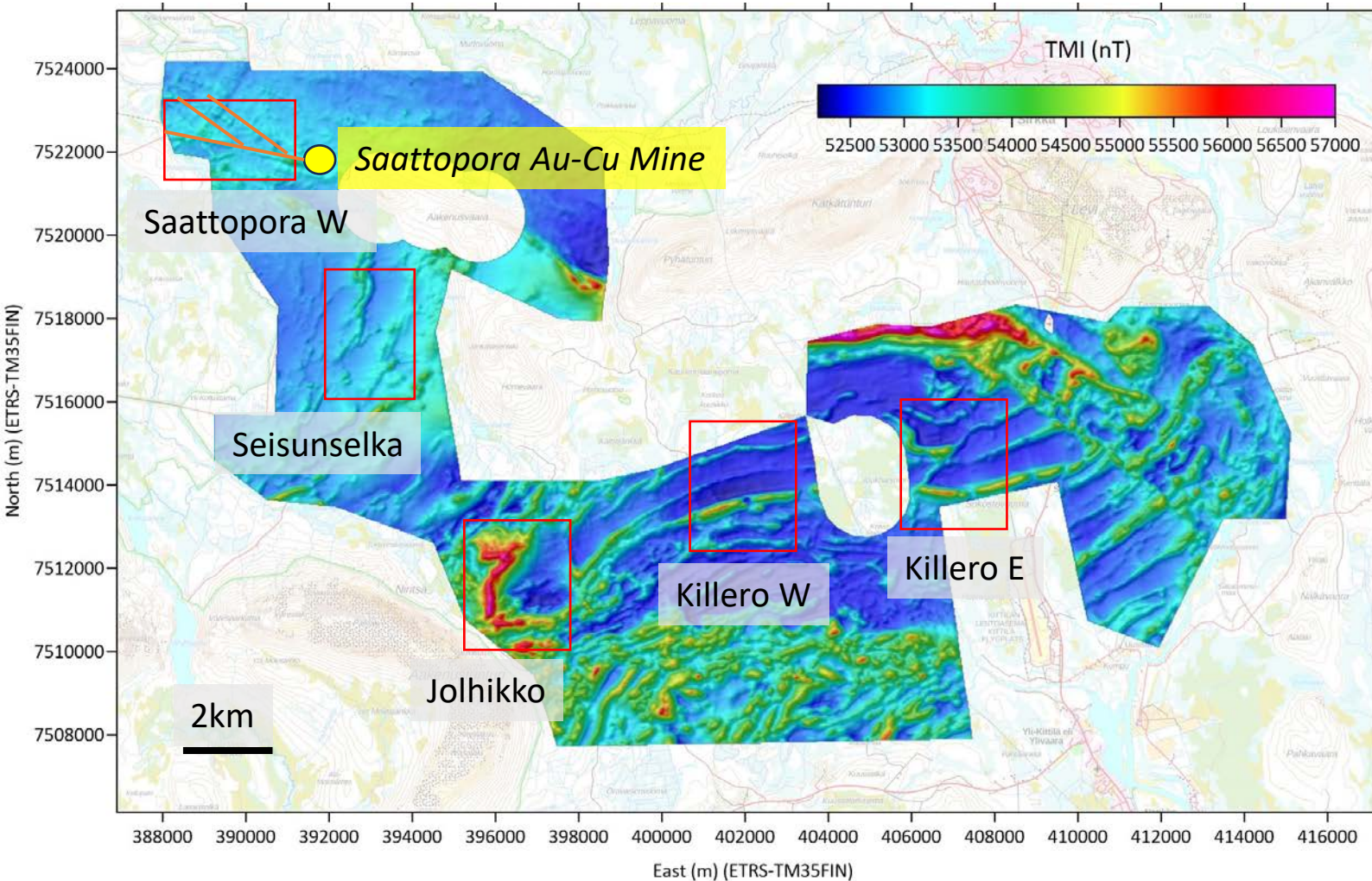
**Capella's 5 Exploration Permits lie within AEM's area of consolidation (and 40km SW of Kittila Au Mine)**

- *Killero E*
- *Killero W*
- *Saattopora W*
- *Keisunselka*
- *Jolhikko*

**Year 1 of Earn-In JV with Turkish gold miner Tümad Madencilik. Minimum 4,000 DDH commitment.**

# Northern Finland Gold-Copper Projects

Targeting Orogenic Gold-Copper Deposits in the Central Lapland GB

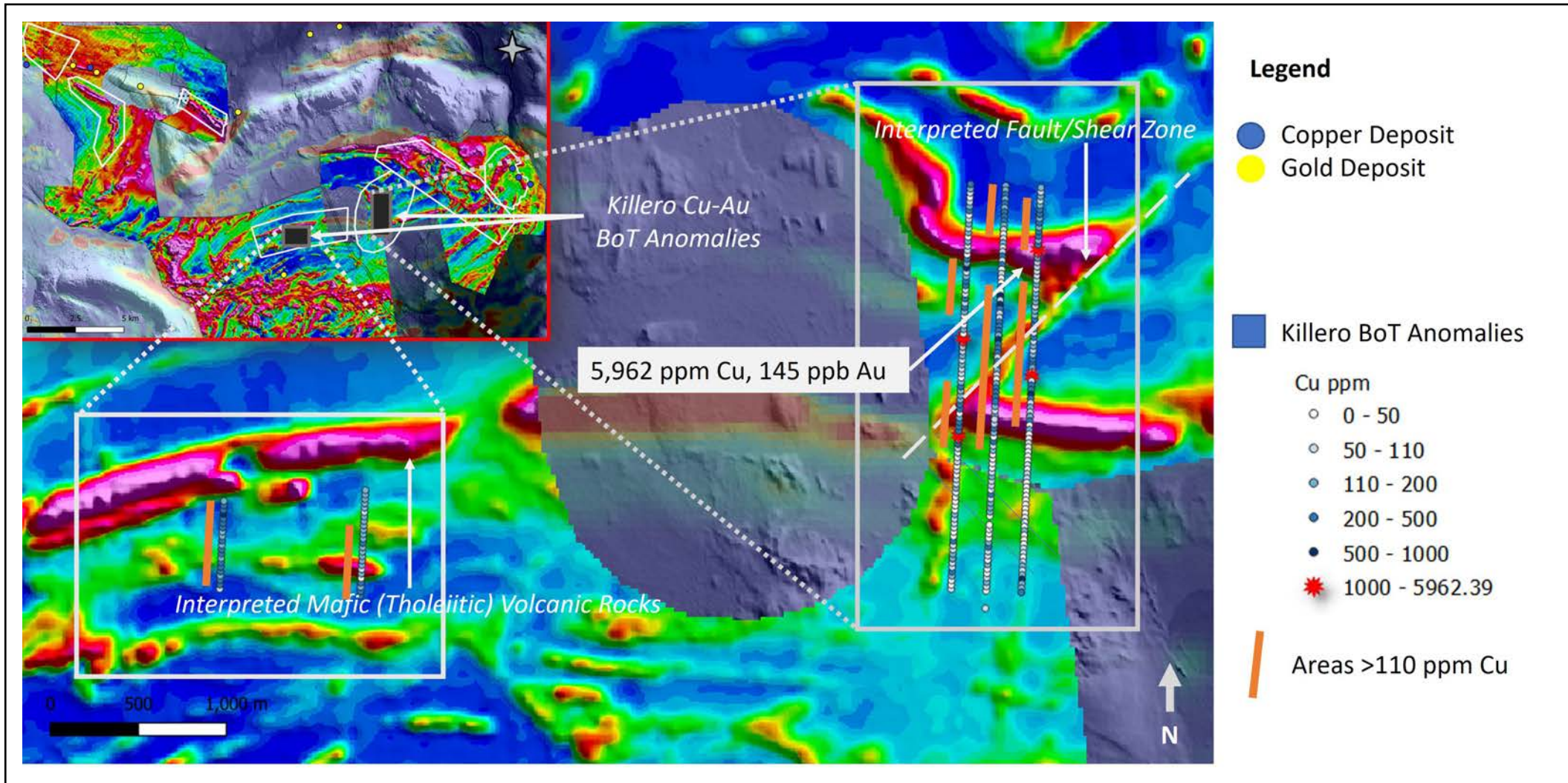


## Exploration Licences (Drill Permits)

- **Killero E (Priority 1)** - Historical AngloAmerican Au-Cu anomaly from “Base of Till” (“BoT”) geochemical sampling
- **Killero W (Priority 1)** - Historical AngloAmerican Au-Cu anomaly from BoT sampling
- **Saattopora W (Priority 1)** - Western extension to Outokumpu Oy’s former Saattopora Au-Cu mine
- **Keisunselka** - Newly-defined Au target (BoT sampling planned)
- **Jolhikko** - Newly-defined Au target (BoT sampling planned)

# Northern Finland Gold-Copper Projects

## Core Drilling In Progress on Killero E Target



# Northern Finland Gold-Copper Projects

Core Drilling and Base of Till Drilling – H1 2026



**SOLANA IRON-OXIDE Cu-Au PROJECT**  
**Andalucia Spain**

# Solana Iron-Oxide Cu-Au Project

First-Class Local Infrastructure



Andasol Solar Plant



Cueva Wind Farm



Alquife Iron Mine



Solana IOCG Project

National Railway & Highway

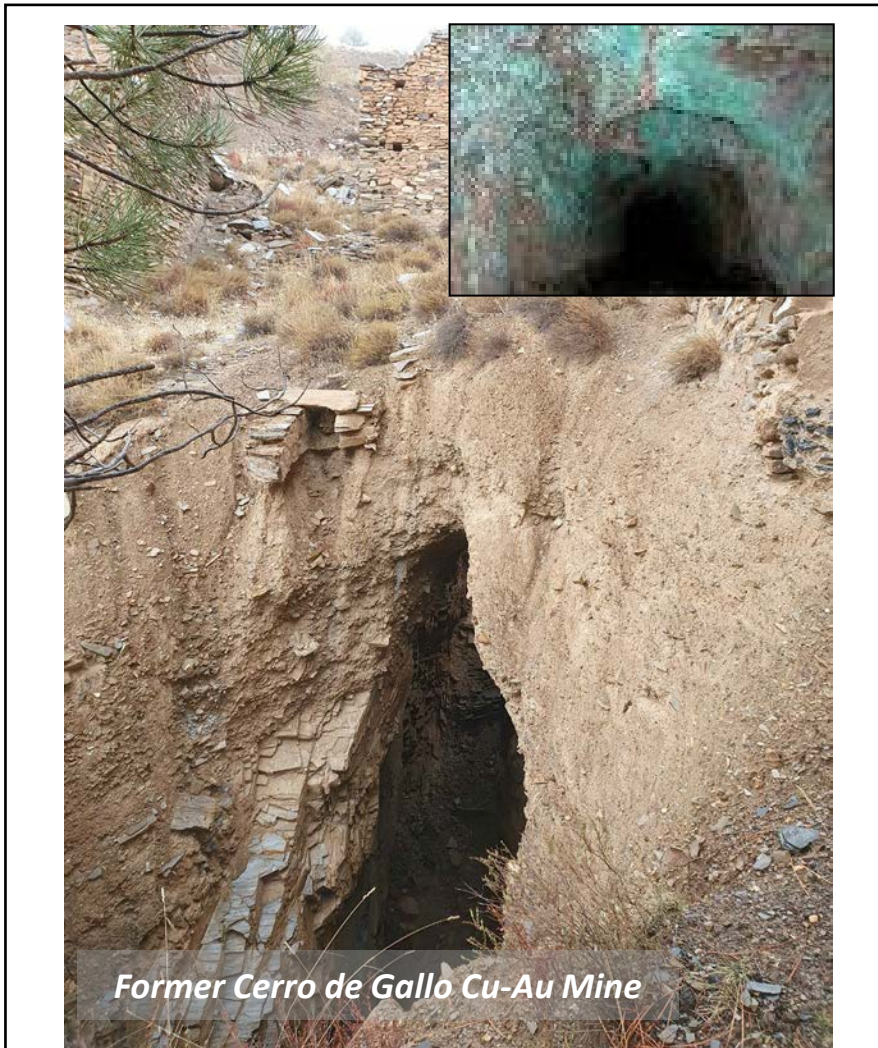
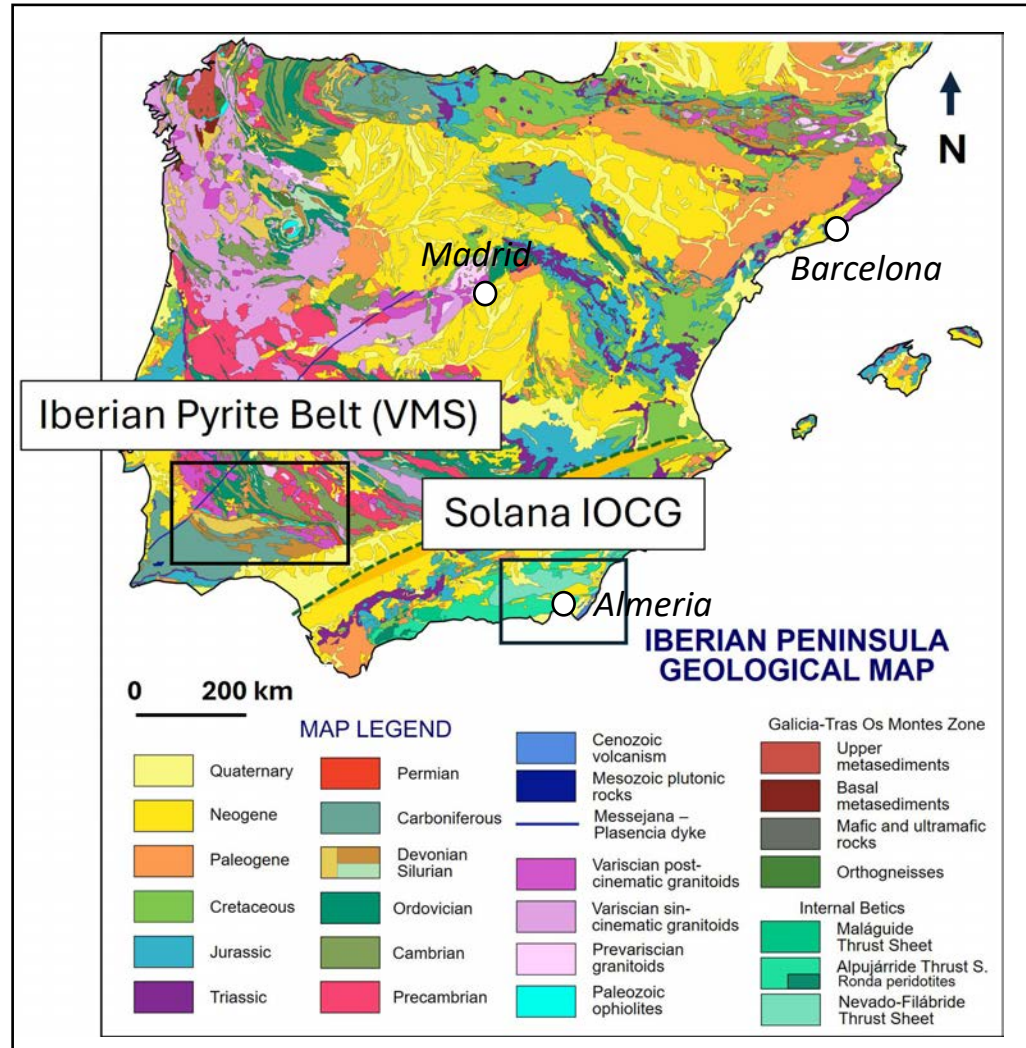
Almeria (Port, Airport)

0 10 km

Google Earth

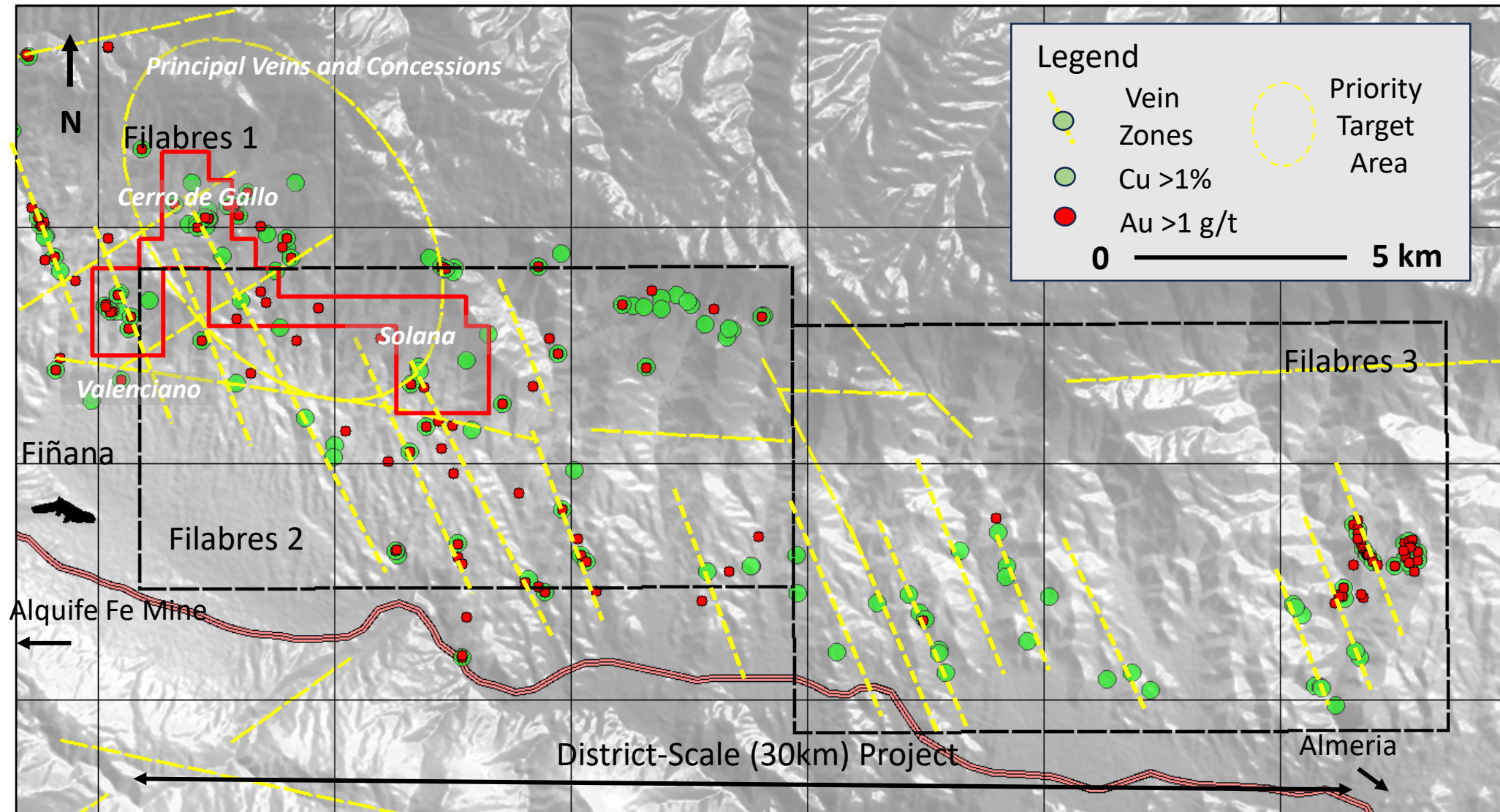
# Solana Iron-Oxide Cu-Au Project

## Targeting IOCG Deposits in Proterozoic SE Spain



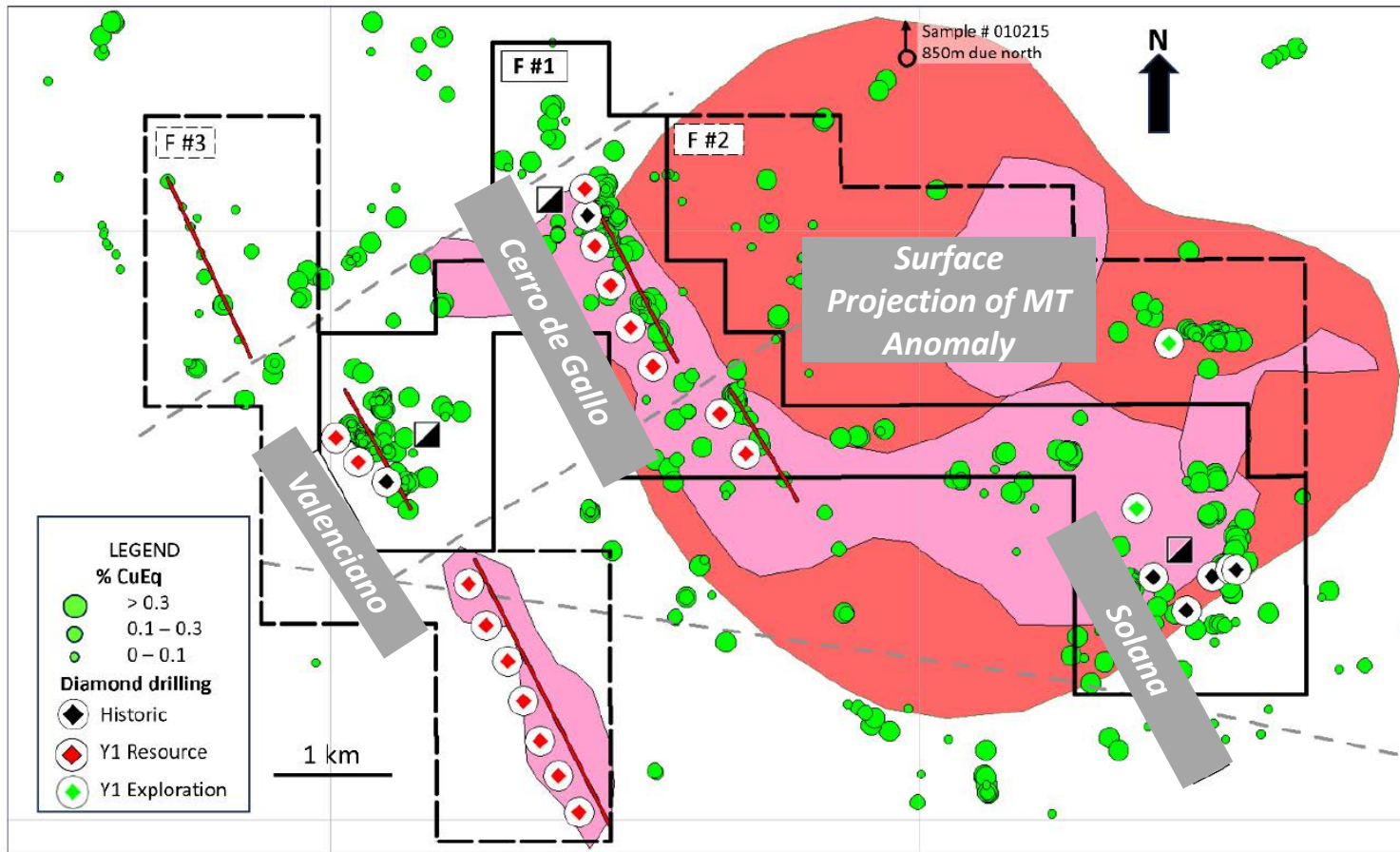
# Solana Iron-Oxide Cu-Au Project

## Targeting IOCG Deposits in Proterozoic SE Spain



# Solana Iron-Oxide Cu-Au Project

## Targeting IOCG Deposits in Proterozoic SE Spain



- 2026 work program to expand on existing geophysical programs (magnetics and magneto-tellurics) to delineate potential source regions for the high-grade Fe-Cu-Au veins identified on surface
- Drilling expected late 2026
- Objective is to both delineate and drill test buried Tier 1 IOCG systems



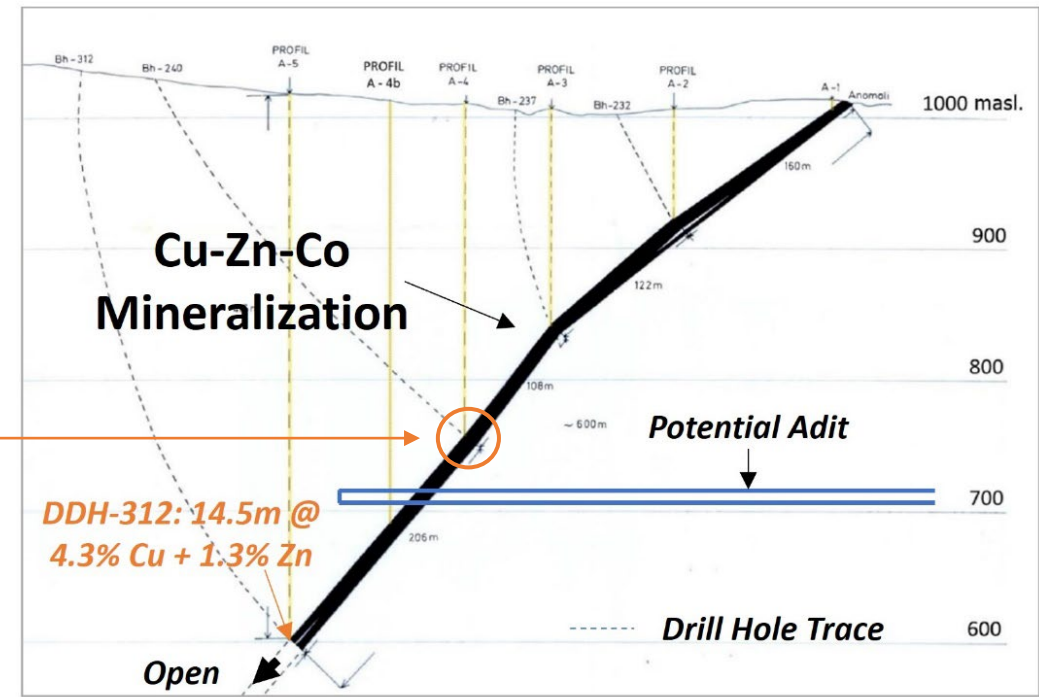
**HESSJOGRUVA Cu-Co-Zn VMS PROJECT**  
**Advanced-Stage Exploration Project**

# Hessjøgruva Cu-Zn-Co VMS Project

## Advanced-Stage Exploration Project (100% Capella)



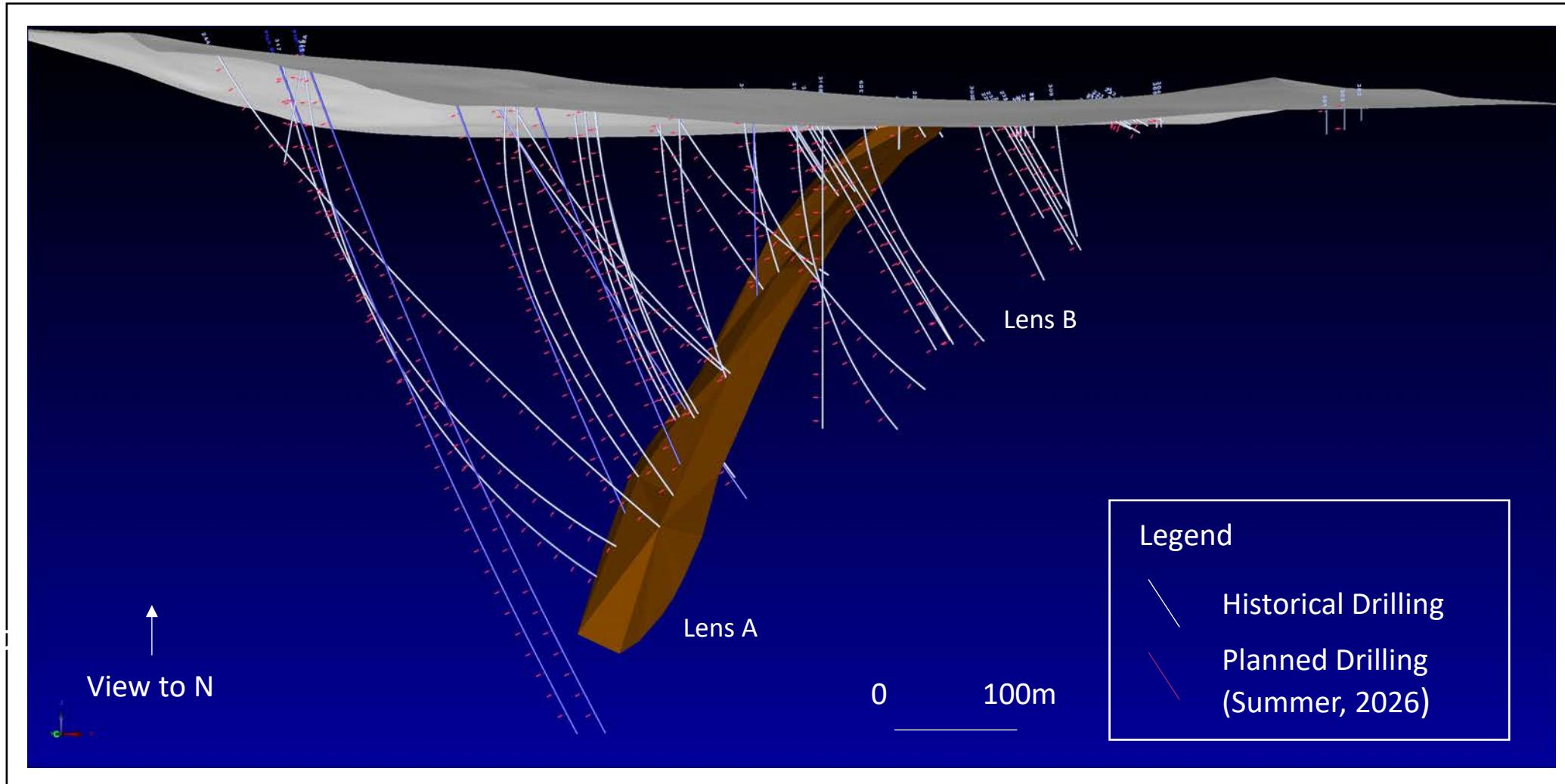
### Lens A Section



- High-grade mineralization remains open down dip, copper grades increase with depth

# Hessjøgruva Cu-Zn-Co VMS Project

## 3D Wireframe for Lens A Mineralization



- 12,035m Historical Drilling (1970's); 8,000m Drilling Planned for 2026

# Capella – Value Drivers 2026 / 2027



Project	2026				2027				
	Q1	Q2	Q3	Q4	Q1				
<b>Northern Finland Gold-Copper</b>									
Diamond Drilling - 4,000m Killero E, Killero W, Saattopora						RESOURCE DEFINITION DRILLING?			
Base of Till Drilling - Jolhikko, Seisunselka									
<b>Hessjogruva Copper-Cobalt-Zinc (Norway)</b>									
Diamond Drilling - 8,000m						PERMIT RENEWAL			
Metallurgical Testwork & Mineral Resource									
Preliminary Economic Assessment									
Tumad JV Year 1 Work Commitment					Tumad JV Year 2?				
<b>Solana Iron-Oxide Copper-Gold (Spain)</b>									
Ground Gravity and Magnetic Surveys - Filabres 1									
Diamond Drilling - 2,000m Filabres 1									
Ground Gravity and Magnetic Surveys - PE1 & 2						CLAIM APPROVAL			
Diamond Drilling - 2,000m PE 1 & 2									
Capella Earn-In									

# Contacts



## **Website**

[www.capellaminerals.com](http://www.capellaminerals.com)

## **Email**

[info@capellaminerals.com](mailto:info@capellaminerals.com)

## **Contact**

**Eric Roth** - President & CEO

**Karen Davies** - VP Shareholder  
Relations & Corporate Development

